

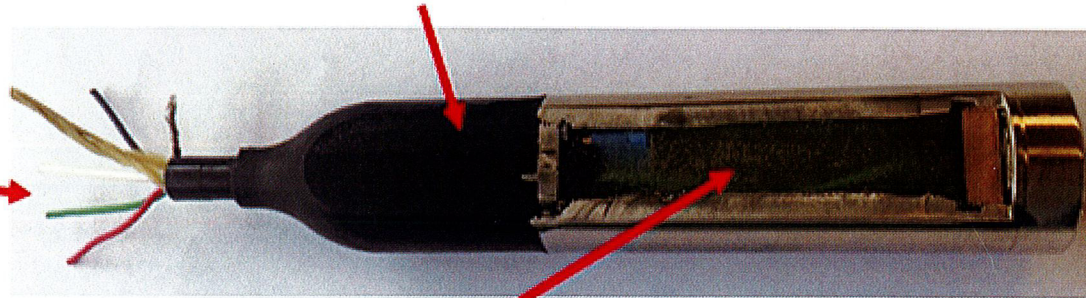
Engineered Features of VL2000 that contribute to the superior longevity and reliability

The polyurethane jacketed cable is molded to the stainless-steel sensor housing to provide a high-integrity, water-tight seal.

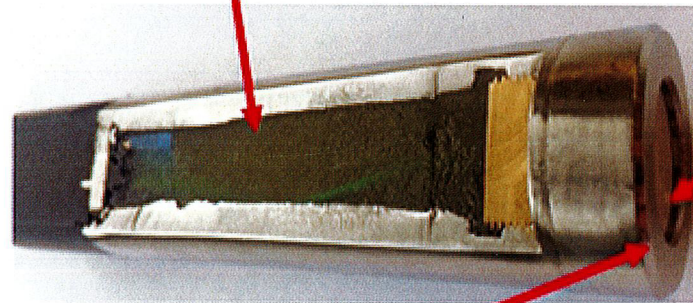
The specialty cable used with the VL2000 includes:

- ⇒ Red wire = + Supply
- ⇒ Black wire = - Return
- ⇒ Green wire = Ground
- ⇒ White wire = Not used
- ⇒ Shield = Ground shield
- ⇒ Kevlar strands to prevent the cable from elongating over time.

The polyurethane cable terminates with stripped & tinned flying leads.



PMC fills the entire housing with a potting compound that helps to protect the electronics from water damage.



The robust ceramic sensing element is close to 60 times thicker than most oil-filled metal sensing diaphragms.

Because the diaphragm is very thick, it resists abrasion damage or damage from physical contact with foreign objects.

PMC's ceramic capacitive sensing element is mounted at the end of the sensor and does not require a protective nose-cone.

The benefit of this is that the sensor becomes clog-free, as there are no cavities or holes for debris to collect.