

Instruction Sheet

Four-Function Valve (4FV) Installation Instructions

The LMI Four-Function Valve (4FV) is designed to replace the discharge valve on the LMI pump. Carefully remove the discharge valve currently on the pump and replace it with the Four-Function Valve.

FOR VALVE MODEL NO.:

25690	25700	25900	26035	26615
27043	27048	27051	28010	28022
28046	30419	30420	30475	30476

A. PRIMING

1. Connect pressure release tubing to pressure release port.
2. Route tubing to solution reservoir and anchor with plastic tie provided.
3. Set pump at 80% speed and 100% stroke. Start pump.
4. Pull on Pressure Release knob (red or black knob) holding knob out until chemical is visible through translucent return tubing.
5. Pump is now primed.

NOTE:

(a) *Pump is normally self-priming if suction lift is no more than 5 ft (1.5 m), valves in the pump are wet with water (pump is shipped from factory with water in pump head) and the above steps (A1 through A3) are followed.*

(b) *If the pump does not self prime, remove Anti-Syphon/Pressure Release Valve Assembly and discharge valve ball, and pour water or chemical slowly into discharge port until it is filled. Replace valve ball and follow steps A1 through A5 thereafter.*

B. DEPRESSURIZING DISCHARGE LINE

1. It is possible to depressurize discharge line and pump head without removal of tubing or loosening of fittings.

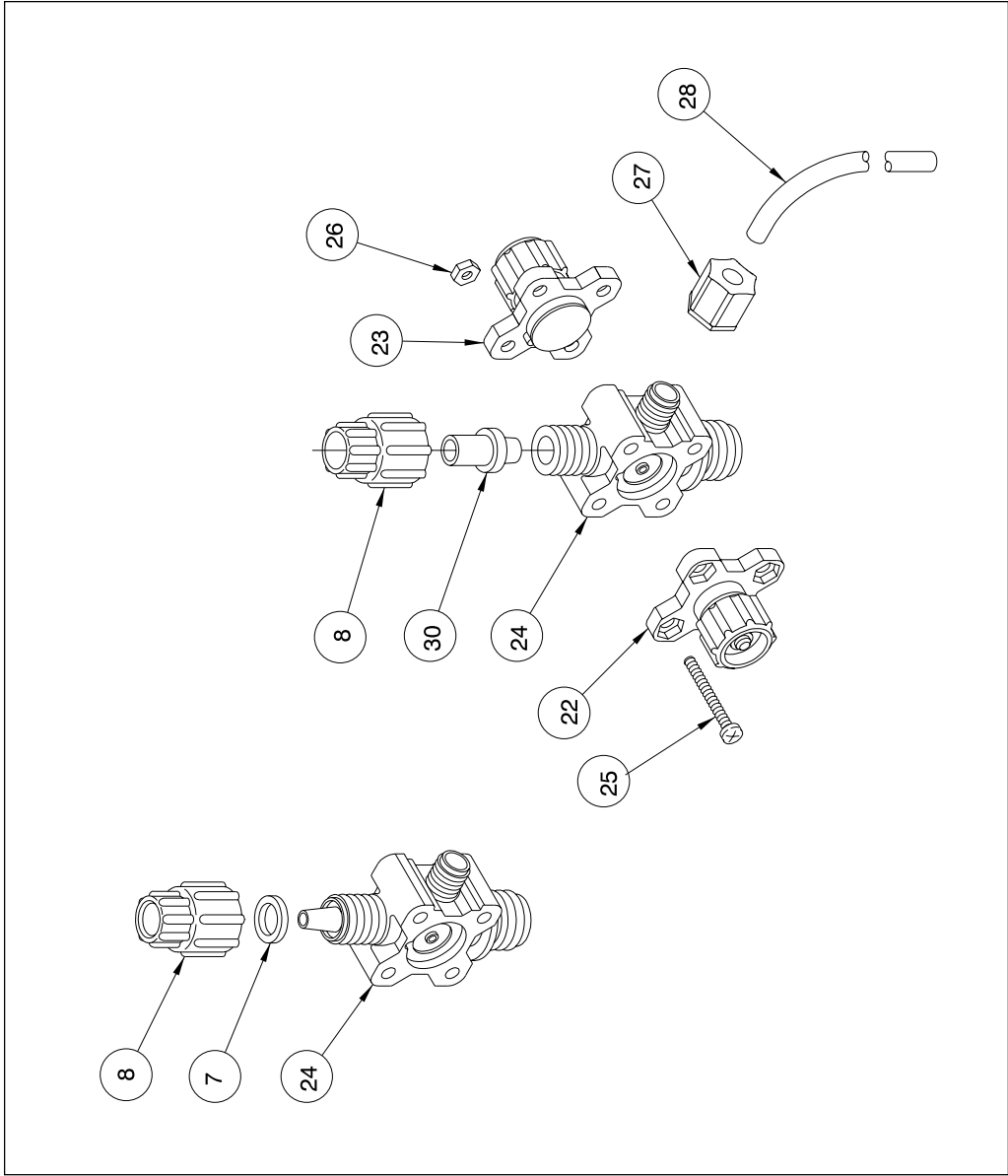
Be sure injection check valve is properly installed and is operating. If a gate valve or globe has been installed, downstream of injection check valve, it should be closed. Be certain relief tubing is connected and run to chemical reservoir.

2. Pull on both anti-syphon and relief knobs.
3. The discharge line is now depressurized.
4. If injection check valve is of higher elevation than pump head, disconnecting tubing at injection check valve end will allow air to enter and cause chemical to drain back to tank.



8 Post Office Square
Acton, MA 01720 USA
TEL: (508) 263-9800
FAX: (508) 264-9172
<http://www.lmipumps.com>







8 Post Office Square
Acton, MA 01720 USA
TEL: (508) 263-9800
FAX: (508) 264-9172
<http://www.lmipumps.com>