



## Seal Gauges and Seal Switches

**SGB Series**



- Accuracy;  $\pm 1\%$  Gauges /  $\pm 2\%$  Switches
- Full Scale Ranges from 15 psig to 400 psig
- Anti-Clogging and Corrosion Resistant
- Connection via Bottom or Back
- Seal Switches are Nema 4

**PMC Seal Gauges (SGB Series)** accurately measure pressure in industries where viscous materials are processed. The PMC design includes a  $1\frac{1}{2}$ " sensing area and permits the diaphragm to be installed flush with the inside wall of pipes 3" or larger. This feature eliminates the pocketing problems usually encountered with conventional seal gauge systems. The easy to read, all-stainless steel 4" gauge is oil-filled and incorporates a damper to promote longevity. Each Seal Gauge and Switch is equipped with a proven PMC transmitter and can be bottom or back connected for greater visibility. **PMC Seal Switches (SGB/SW Series)** include a Nema 4 rated enclosure and adjustable ranges.

**The PMC Sanitary Seal Gauges and Seal Switches (SGB/SAN & SGB/SW SAN Series)** modifies the proven SGB & SGB/SW Series to include a 3A Sanitary-Approved Seal at the diaphragm face. These products were specifically designed to address the sanitary needs of the Food, Chemical, Brewery, and Pharmaceutical industries. The weld-on nipple can be mounted in most quick disconnect couplings.

## STANDARD SPECIFICATIONS

### ■ Seal Gauges - Full Scale Ranges (Zero Based)

100 psig is standard and well suited to most applications. 15, 30, 60, 200, 300, & 400 psig ranges also available. Consult factory for other engineering units and variations

### ■ Seal Switches - Full Scale Ranges

Set-able from 0.5 psig to 250 psig

### ■ Accuracy

± 1% over range Gauges, ± 2% over range Switches

### ■ Operating Temperature Range

400°F Process Temperature

### ■ Construction

Stainless Steel Construction, 316L for wetted parts

### ■ Installation

316L SS Weld-On Nipple furnished with each transmitter. See also Options listed below

### ■ Gauge

4" Diameter, High-Visibility, Oil-Filled

### ■ Mounting

Back of Bottom mounting orientation

## ORDERING INFORMATION

# SGB Series

## Seal Gauge and Seal Switch

When ordering please specify the following:

MODEL PMC - SGB	
	Gauge W/SS Weld-On Nipple
SAN	Gauge W/SS Sanitary Weld-On Nipple
SW	Switch W/SS Weld-On Nipple
SWSAN	Switch W/SS Sanitary Weld-On Nipple
Range	Specify psi, " WC, Bar, absolute, gauge, etc.
O-Ring	
V	Vitron (400°F)
Diaphragm	
Hc	Hastelloy C
Temperature	
S	400°F

(1) (2) (3) (4) (5)  
Select Specify Select Select Standard

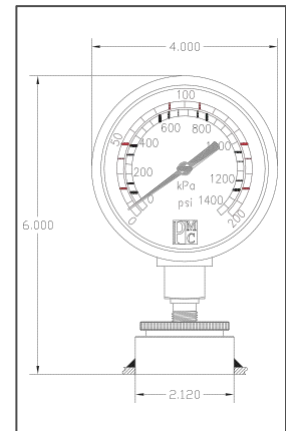
### Order Code Example: PMC-SGB-SAN-100psig-V-Hc-S

- (1) Model: PMC-SGB SAN SANITARY SEAL GAUGE
- (2) Range: 100 psi gauge
- (3) O-Ring Material: Vitron
- (4) Diaphragm Material: Hastelloy C
- (5) Temperature: For use up to 400°F

## OPTIONS

PMC offers a range of options, accessories, and variants for Seal Gauges and Switches. Most common variants include a variety of process connections such as: 2" SS Tri Clamp®, 2" Hastelloy-C Tri Clamp®, Threaded Nipple (not sanitary), Flanges, etc.

Contact PMC for other options and accessories



All measurements shown in inches

PMC adopts a continuous development program which sometimes necessitates specification changes without notice.



## Process Measurement & Controls, Inc.

App4Water  
2 Forest Drive  
Catonsville, MD 21228  
410.744.9040 phone  
410.744.6062 fax  
www.app4water.com