

# Relay Module

## ELK-912B & 912B-6

The ELK-912B is a heavy duty relay module featuring 12 or 24Volts D.C. selectable operation, SPDT Form "C" contacts, low current draw, voltage input LED, and high quality large cross-head terminals. It is ideal for general purpose switching of devices or high current loads. Also available in a 6 pack (ELK-912B-6) which is packaged as multiple relay modules grouped on a pre-scored break-off circuit board.



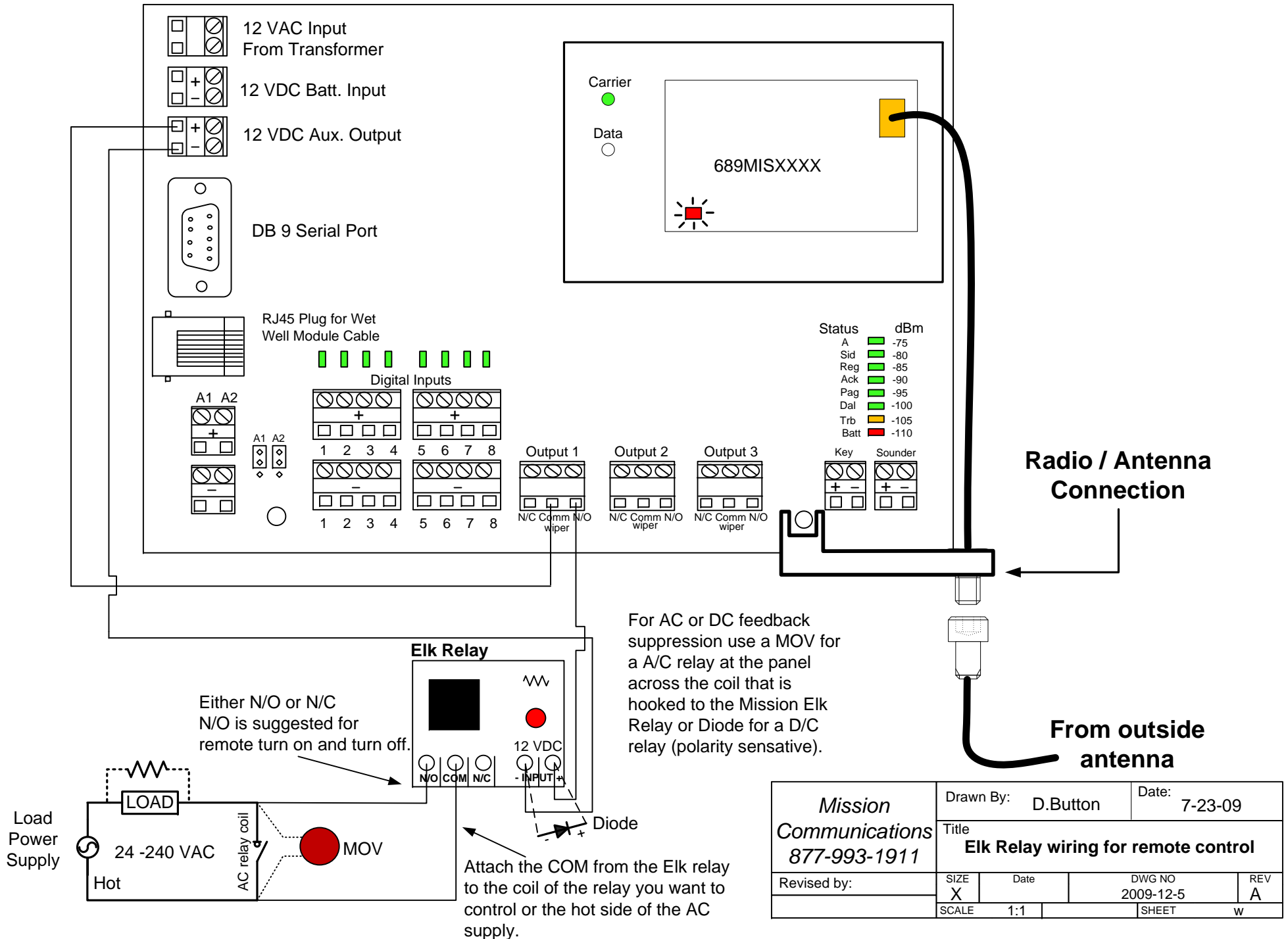
## Features

- High Quality Cross-head Terminals.
- 12 or 24 Volts D.C. Selectable Operation.
- Low Current Draw.
- Voltage Input LED.
- Form "C" Dry Contacts.
- Great For General Purpose Switching.
- Small, Compact Size.
- Double Sided Foam Tape Provided For Mounting.
- Packaged in Reusable Poly Storage Box.
- Lifetime Limited Warranty.

## Specifications

- Operating Voltage: 12 or 24 Volts D.C. Nominal.
- Current Draw: 35mA, triggered (relay on).
- Relay Contacts: Form "C", 7A @ 30 VDC, 10A @ 125 VAC.
- Min. Pull-in Voltage: 9 VDC on 12V setting, 19 VDC on 24V setting.
- Size: 2" X 1.5 " (51mm X 38mm) Ea..

# Mission Main Board



<i>Mission Communications</i> <i>877-993-1911</i>	Drawn By: D.Button		Date: 7-23-09	
	Title <b>Elk Relay wiring for remote control</b>			
Revised by:	SIZE X	Date	DWG NO 2009-12-5	REV A
	SCALE 1:1		SHEET	W